



Certificate of Analysis

Customer:
Buffalo Skull Ranch
407 Hwy 2392/ 2774 HWY 1223
Corbin, KY 40701

Sample ID: **211026017**
Order Number: **CB211026011**
Sample Name: **Pink Panther x Alpen Gleaux**

Collected Date:
Received Date: **10/26/2021**
COA Released: **10/28/2021**

External Sample ID:
Batch Number:
Product Type: **Flower**
Sample Type: **Flower**

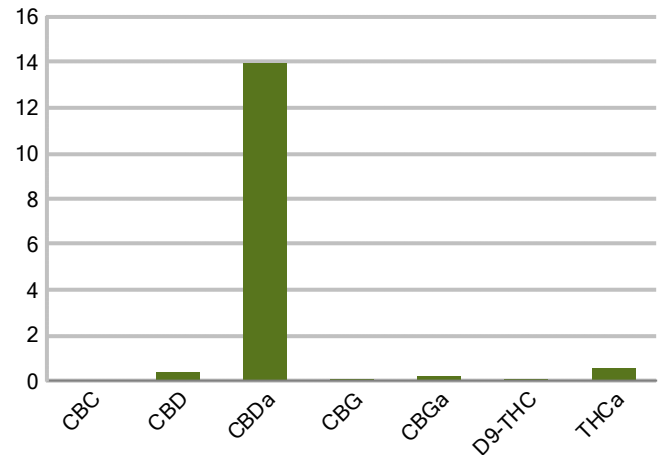
Comments:

CANNABINOID PROFILE

Analyte	LOQ (%)	% weight	mg/g
CBC	0.01	0.037	0.368
CBD	0.01	0.365	3.645
CBDa	0.01	13.98	139.8
CBDV	0.01	ND	ND
CBG	0.01	0.043	0.431
CBGa	0.01	0.195	1.950
CBN	0.01	ND	ND
d8-THC	0.01	ND	ND
d9-THC	0.01	0.043	0.429
THCa	0.01	0.539	5.389
Total Cannabinoids		15.20	152.0
Total Potential THC		0.515	5.155
Total Potential CBD		12.62	126.2
Total Potential CBG		0.214	2.143



Cannabinoids (% weight)



Ratio of Total Potential CBD to Total Potential THC 24.51 : 1

Ratio of Total Potential CBG to Total Potential THC 0.42 : 1

**Total Cannabinoids refers to the sum of all cannabinoids detected.*

**Total Potential CBD = (0.877 x CBDa) + CBD. *Total Potential THC = (0.877 x THCa) + THC. *Total Potential CBG = (0.877 x CBGa) + CBG.*

**Total Potential THC/CBD are calculated to take into account the loss of an acid group during decarboxylation.*



PJLA
Testing
Accreditation #109588

Authorized Signature

Laboratory Manager

Jamie Hobgood

10/28/2021 9:43 AM

DATE

This product has been tested by CannaBusiness Laboratories using validated testing methodologies and a quality system. Values reported relate only to the product tested. CannaBusiness Laboratories makes no claims as to the efficacy, safety or other risks associated with any detected or non-detected levels of any compounds reported herein. This Certificate shall not be reproduced except in full, without the written permission of CannaBusiness Laboratories. Uncertainty information is available on request. Photo is of sample received by the lab and may vary from final packaging. The results apply to the sample as received. ISO/IEC 17025:2017 Accredited.



Sample ID: 211026017
Sample Name: Pink Panther x Alpen
Sample Type: Flower

Certificate of Analysis

Customer

Buffalo Skull Ranch
407 Hwy 2392/ 2774 HWY
Corbin, KY 40701



Overall Batch Results	
Pesticide	Moisture Content
Potency	Water Activity
Mycotoxins	Heavy Metals
Microbial Screen	Residual Solvents
Terpenoids	

Sample Name: Pink Panther x Alpen
Gleaux
Sample ID: 211026017
Product Type: Flower
Sample Type: Flower
Collected Date:
Received Date: 10/26/2021
Batch Number:
Batch Size:
Sample Size:
COA released: 10/28/2021 9:43 AM

Potency (mg/g)			
Date Tested: 10/27/2021		Method: CB-SOP-028	
Instrument:			
0.515 %	12.62 %	15.20 %	152.0 mg/g
Total THC	Total CBD	Total Cannabinoids	Total Cannabinoids

Analyte	Result	Units	LOQ	Result	Units
CBC (Cannabichromene)	0.037	%	0.010	0.368	mg/g
CBD (Cannabidiol)	0.365	%	0.010	3.645	mg/g
CBDa (Cannabidiolic Acid)	13.98	%	0.010	139.8	mg/g
CBDV (Cannabidivarin)	ND	%	0.010	ND	mg/g
CBG (Cannabigerol)	0.043	%	0.010	0.431	mg/g
CBGa (Cannabigerolic Acid)	0.195	%	0.010	1.950	mg/g
CBN (Cannabinol)	ND	%	0.010	ND	mg/g
D8-THC (D8-Tetrahydrocannabinol)	ND	%	0.010	ND	mg/g
D9-THC (D9-Tetrahydrocannabinol)	0.043	%	0.010	0.429	mg/g
THCa (Tetrahydrocannabinolic Acid)	0.539	%	0.010	5.389	mg/g



Authorized Signature

J. Hobgood
Laboratory Manager

Jamie Hobgood

10/28/2021 9:43 AM

Date Time

NT = Not tested, ND = Not detected; LOQ = Limit of Quantitation; <LOQ = Detected; >ULOL = Above upper limit of linearity; CFU/g = Colony forming units per 1 gram; TNTC = Too numerous to count

CannaBusiness Laboratories
License # P-0059: (859)-514- 6999 <https://www.cannabusinesslabs.us>

This product has been tested by CannaBusiness Laboratories using validated testing methodologies and a quality system. Values reported relate only to the product tested. CannaBusiness Laboratories makes no claims as to the efficacy, safety, or other risks associated with any detected or non-detected levels of any compounds reported herein. This Certificate shall not be reproduced except in full, without the written permission of CannaBusiness Laboratories. Uncertainty information is available on request. Photo is of sample received by the lab and may vary from final packaging. The results apply to the sample as received. ISO/IEC 17025:2017 Accredited.