



Certificate of Analysis

Customer:
Kentucky Home Grown

Sample ID: **211214005**
Order Number: **CB211214007**
Sample Name: **Pink Panther**

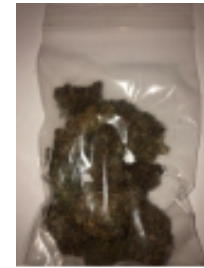
Collected Date:
Received Date: **12/14/2021**
COA Released: **12/16/2021**

External Sample ID:
Batch Number:
Product Type: **Flower**
Sample Type: **Flower**

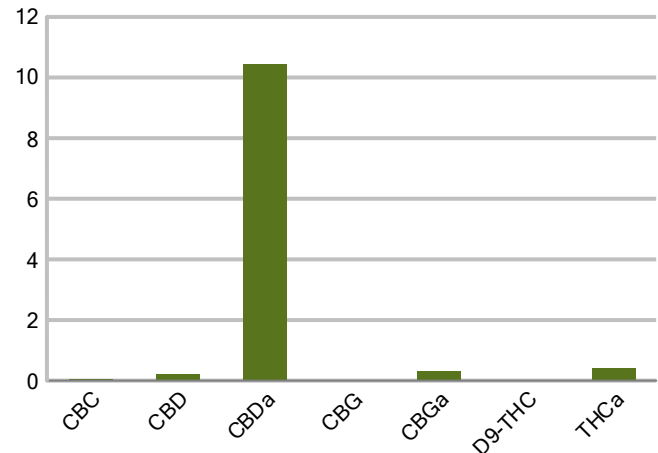
Comments:

CANNABINOID PROFILE

Analyte	LOQ (%)	% weight	mg/g
CBC	0.01	0.032	0.319
CBD	0.01	0.230	2.303
CBDa	0.01	10.43	104.3
CBDV	0.01	ND	ND
CBG	0.01	0.020	0.200
CBGa	0.01	0.310	3.096
CBN	0.01	ND	ND
d8-THC	0.01	ND	ND
d9-THC	0.01	0.027	0.268
THCa	0.01	0.418	4.179
Total Cannabinoids		11.47	114.7
Total Potential THC		0.393	3.933
Total Potential CBD		9.382	93.82
Total Potential CBG		0.292	2.918



Cannabinoids (% weight)



Ratio of Total Potential CBD to Total Potential THC 23.87 : 1

Ratio of Total Potential CBG to Total Potential THC 0.74 : 1

*Total Cannabinoids refers to the sum of all cannabinoids detected.

*Total Potential CBD = (0.877 x CBDa) + CBD. *Total Potential THC = (0.877 x THCa) + THC. *Total Potential CBG = (0.877 x CBGa) + CBG.

*Total Potential THC/CBD are calculated to take into account the loss of an acid group during decarboxylation.



PJLA
Testing
Accreditation #109588

Authorized Signature

Laboratory Manager

Jamie Hobgood

12/16/2021 9:31 AM

DATE

This product has been tested by CannaBusiness Laboratories using validated testing methodologies and a quality system. Values reported relate only to the product tested. CannaBusiness Laboratories makes no claims as to the efficacy, safety or other risks associated with any detected or non-detected levels of any compounds reported herein. This Certificate shall not be reproduced except in full, without the written permission of CannaBusiness Laboratories. Uncertainty information is available on request. Photo is of sample received by the lab and may vary from final packaging. The results apply to the sample as received. ISO/IEC 17025:2017 Accredited.

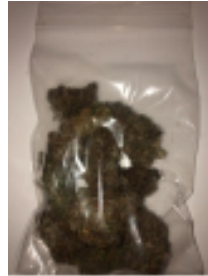


Sample ID: 211214005
Sample Name: Pink Panther
Sample Type: Flower

Certificate of Analysis

Customer

Kentucky Home Grown



Overall Batch Results	
Pesticide	Moisture Content
Potency	Water Activity
Mycotoxins	Heavy Metals
Microbial Screen	Residual Solvents
Terpenoids	

Sample Name: Pink Panther
Sample ID: 211214005
Product Type: Flower
Sample Type: Flower
Collected Date:
Received Date: 12/14/2021
Batch Number:
Batch Size:
Sample Size:
COA released: 12/16/2021 9:31 AM

Potency (mg/g)			
Date Tested: 12/15/2021		Method: CB-SOP-028	
Instrument:			
0.393 %	9.382 %	11.47 %	114.7 mg/g
Total THC	Total CBD	Total Cannabinoids	Total Cannabinoids

Analyte	Result	Units	LOQ	Result	Units
CBC (Cannabichromene)	0.032	%	0.010	0.319	mg/g
CBD (Cannabidiol)	0.230	%	0.010	2.303	mg/g
CBDa (Cannabidiolic Acid)	10.43	%	0.010	104.3	mg/g
CBDV (Cannabidivarin)	ND	%	0.010	ND	mg/g
CBG (Cannabigerol)	0.020	%	0.010	0.200	mg/g
CBGa (Cannabigerolic Acid)	0.310	%	0.010	3.096	mg/g
CBN (Cannabinol)	ND	%	0.010	ND	mg/g
D8-THC (D8-Tetrahydrocannabinol)	ND	%	0.010	ND	mg/g
D9-THC (D9-Tetrahydrocannabinol)	0.027	%	0.010	0.268	mg/g
THCa (Tetrahydrocannabinolic Acid)	0.418	%	0.010	4.179	mg/g



Authorized Signature

J. Hobgood
Laboratory Manager

Jamie Hobgood

12/16/2021 9:31 AM

Date Time

NT = Not tested, ND = Not detected; LOQ = Limit of Quantitation; <LOQ = Detected; >ULOL = Above upper limit of linearity; CFU/g = Colony forming units per 1 gram; TNTC = Too numerous to count

CannaBusiness Laboratories
License # P-0059: (859)-514- 6999 <https://www.cannabusinesslabs.us>

This product has been tested by CannaBusiness Laboratories using validated testing methodologies and a quality system. Values reported relate only to the product tested. CannaBusiness Laboratories makes no claims as to the efficacy, safety, or other risks associated with any detected or non-detected levels of any compounds reported herein. This Certificate shall not be reproduced except in full, without the written permission of CannaBusiness Laboratories. Uncertainty information is available on request. Photo is of sample received by the lab and may vary from final packaging. The results apply to the sample as received. ISO/IEC 17025:2017 Accredited.